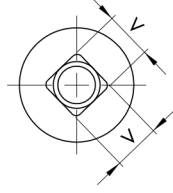
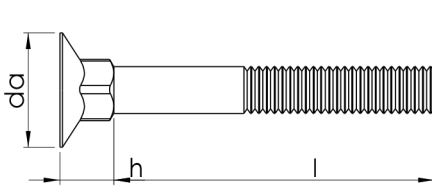


## DIN 605

### BIÇAK CIVATASI

### FLAT COUNTERSUNK SQUARE NECK BOLTS

### SENKSCHRAUBEN MIT HOHEM VIERKANTANSATZ



#### Technical Informations / Teknik Bilgiler

Thread size / Anma çapı (d)		M5	M6	M8	M10	
Pitch / Diş adımı	P	0,80	1,00	1,25	1,50	
Head height / Kafa yüksekliği	h	min.	5,60	6,55	8,55	10,55
		max.	6,40	7,45	9,45	11,45
Head dia / Kafa çapı	da	min.	12,55	15,55	19,45	23,45
		max.	13,45	16,45	20,55	24,55
Square width / Kafa genişliği	v	min.	4,52	5,52	7,42	9,42
		max.	5,48	6,48	8,58	10,58

Thread size / Anma çapı (d)		M5	M6	M8	M10	
Length / Boy (l)	min.					
	max.					
			Weight / Ağırlık gr/p			
30	28,95	31,05	5,40	8,80	15,40	
35	33,95	36,05	6,20	9,80	17,40	
40	38,95	41,05	6,90	10,80	19,30	30,60
45	43,75	46,25		11,90	21,30	33,60
50	48,75	51,25		12,90	23,20	36,50
55	53,75	56,25		13,90	25,20	38,40
60	58,75	61,25		14,90	27,10	42,40
65	64,50	66,50			29,10	45,30
70	68,50	71,50			31,00	48,20
80	78,50	81,50			34,90	54,10
90	88,50	91,50				59,90
100	98,50	101,50				65,70

Values are given in millimeters. / Değerler milimetre olarak verilmiştir.